



Prasad Group®



# PLATINA

The finest in town



KOLKATA WAS ONCE THE CAPITAL OF INDIA, THE SECOND MOST IMPORTANT METROPOLIS OF THE BRITISH EMPIRE AFTER LONDON. IT WAS BECAUSE OF A WORLD-STANDARD IN BUSINESS AND FINANCE AND EMERGED IN THE MODERN CONTEXT OUR AND NEW COMMERCIAL PROJECT PLATINA IS ALL SET TO DEFINE THE COMMERCIAL SPACE OF KOLKATA WAS ONCE THE CAPITAL OF INDIA, THE SECOND MOST IMPORTANT METROPOLIS OF THE BRITISH EMPIRE AFTER LONDON. IT WAS BECAUSE OF A WORLD-STANDARD IN BUSINESS AND FINANCE AND EMERGED IN THE MODERN CONTEXT OUR AND NEW COMMERCIAL PROJECT PLATINA IS ALL SET TO DEFINE THE COMMERCIAL SPACE OF KOLKATA WAS ONCE THE CAPITAL OF INDIA, THE SECOND MOST IMPORTANT METROPOLIS OF THE BRITISH EMPIRE AFTER LONDON. IT WAS BECAUSE OF A WORLD-STANDARD IN BUSINESS AND FINANCE AND EMERGED IN THE MODERN CONTEXT OUR AND NEW COMMERCIAL PROJECT PLATINA IS ALL SET TO DEFINE THE COMMERCIAL SPACE OF KOLKATA WAS ONCE THE CAPITAL OF INDIA, THE SECOND MOST IMPORTANT METROPOLIS OF THE BRITISH EMPIRE AFTER LONDON. IT WAS BECAUSE OF A WORLD-STANDARD IN BUSINESS AND FINANCE AND EMERGED IN THE MODERN CONTEXT OUR AND NEW COMMERCIAL PROJECT PLATINA IS ALL SET TO DEFINE THE COMMERCIAL SPACE OF

[www.510earth.com](http://www.510earth.com)

SETTING THE PLATINUM STANDARD

Kolkata was once the Capital of India, the second most important metropolis in the British Empire after London. It was once a gold-standard in business and commerce. In the modern context our brand new commercial project Platina is all set to redefine the commercial space of Kolkata with the platinum standard.



KOLKATA WAS ONCE THE CAPITAL OF INDIA, THE SECOND MOST IMPORTANT METROPOLIS IN THE BRITISH EMPIRE AFTER LONDON. IT WAS ONCE A GOLD-STANDARD IN BUSINESS AND COMMERCE. IN THE MODERN CONTEXT OUR BRAND NEW COMMERCIAL PROJECT PLATINA IS ALL SET TO REDEFINE THE COMMERCIAL SPACE





THEATRE OF GROWTH

Located centrally at the posh, prestigious and upmarket 'Theatre Road' (rechristened Shakespeare Sarani), at the heart of the Central Business & Retail District. It is well connected to most of the places of interest and curiosity in town.



KOLKATA WAS ONCE THE CAPITAL OF INDIA, THE SECOND MOST IMPORTANT METROPOLIS IN THE BRITISH EMPIRE AFTER LONDON. IT WAS ONCE A GOLD-STANDARD IN BUSINESS AND COMMERCE. IN THE MODERN CONTEXT OUR BRAND NEW COMMERCIAL PROJECT PLATINA IS ALL SET TO REDEFINE THE COMMERCIAL SPACE OF KOLKATA WITH THE PLATINUM STANDARD.

KOLKATA WAS ONCE THE CAPITAL OF INDIA, THE SECOND MOST IMPORTANT METROPOLIS IN THE BRITISH EMPIRE AFTER LONDON. IT WAS ONCE A GOLD-STANDARD IN BUSINESS AND COMMERCE. IN THE MODERN CONTEXT OUR BRAND NEW COMMERCIAL PROJECT PLATINA IS ALL SET TO REDEFINE THE COMMERCIAL SPACE OF KOLKATA WITH THE PLATINUM STANDARD.



## THE PLATINA EDGE

Brought to you by the prestigious 'Prasad Group', this commercial project is going to set you & your business at the pinnacle of the prestige and enter the next level of bespoke workplace. The project enjoys its prominent location and has been benchmarked against international standards and seamlessly designed to offer flexibility and is in proximity to other business and retail hubs. Our mission is to create integrated commercial spaces that extrude a natural work life balance.

[www.510earth.com](http://www.510earth.com)







KOLKATA WAS ONCE THE CAPITAL OF INDIA, THE SECOND MOST IMPORTANT METROPOLIS IN THE BRITISH EMPIRE AFTER LONDON. IT WAS ONCE A GOLD-STANDARD IN BUSINESS AND COMMERCE. IN THE MODERN CONTEXT OUR BRAND NEW COMMERCIAL PROJECT PLATINA IS ALL SET TO REDEFINE THE COMMERCIAL SPACE OF KOLKATA WITH THE PLATINUM STANDARD.

## BEHOLD THE GLITZ OF PLATINA

PLATINA is a dream. It is a futuristic approach to business. A workstation that signals your success. Offering customized solutions for office spaces & new age development that fosters your ambitions to enhance your business to the peak of growth. Ultra-spacious office suites make it a one-stop and choicest investment of the wise. Unique concept with international quality architecture.

### USP's:

- Full Glass Façade Structure.
- Luxurious Showroom & Office spaces.
- Sound Connectivity with all the parts of the town.
- 3.63 M Floor to Ceiling height.
- Elite elevation design.



**FASHION**



KOLKATA WAS ONCE THE CAPITAL OF INDIA. THE SECOND MOST IMPORTANT TRADE CENTER IN THE BRITISH EMPIRE. TODAY, WITH IT WAS ONCE A GOLD STANDARD IN BUSINESS AND COMMERCE. THE MODERN CONTEXT OUR BRAND IS ALL SET TO REDEFINE THE COMMERCIAL SPACE OF KOLKATA WITH THE PLATINUM STANDARD



A P I E C E   O F   P L A T I N A   F O R   E V E R Y O N E

The beauty of the project is in its planning. It is going to be a hybrid multipurpose commercial complex with world-class office spaces, alongside cutting-edge high-on-style commercial spaces.



[www.510earth.com](http://www.510earth.com)





PLATINA OFFICES TO SET THE BENCHMARK

KOLKATA WAS ONCE THE MOST IMPORTANT METROPOLIS IN THE BRITISH EMPIRE AFTER LONDON. IT WAS ONCE A GOLD STANDARD IN BUSINESS AND COMMERCE. IN THE MODERN CONTEXT OUR BRAND NEW COMMERCIAL PLATINA IS ALL SET TO REDEFINE THE SPACE OF KOLKATA WITH THE PLATINUM STANDARD. KOLKATA WAS ONCE THE CAPITAL OF INDIA, THE SECOND MOST IMPORTANT METROPOLIS IN THE BRITISH EMPIRE AFTER LONDON. IT WAS ONCE A GOLD STANDARD IN BUSINESS AND COMMERCE. IN THE MODERN CONTEXT OUR BRAND NEW COMMERCIAL PLATINA IS ALL SET TO REDEFINE THE SPACE OF KOLKATA WITH THE PLATINUM STANDARD.





BASK IN THE GLAMOUR OF PLATINA

PLATINA – THE HALLMARK OF TRUST

THE PRESTIGIOUS PRASAD GROUP

SPECIFICATIONS

- Meticulous architecture with superior quality glass façade elevation.
- Perforated aluminium sheet on the facade.
- Impressive well-furnished Entrance Lobby.
- Plush Guest Waiting Area.
- Flexible floor plates of (approx) 7000 sq.ft., spread across 1st – 9th Floor.
- Spacious floor to ceiling height of 3.63 M.
- Luxurious retail space on ground & first floor level of 4.5M & 5.5M floor height.
- Premium office address, built over 0.49 acre land.
- Provision of customized small office spaces on selected floors.
- 3 different levels of Car Parking Spaces including individual, basement & MLCP type.
- Exquisite Entrance Lobby & Vitrified Tiles in Office Suites.
- 2 high-speed OTIS elevators and 1 exclusive elevator for showrooms.
- Provision of exclusive escalator in retail space.
- Sufficient power back-up, including DG, firefighting & transformer.
- Top tier security service including smooth CCTV surveillance.
- Adequate Open Area.
- Provision of Powder Rooms in office spaces.
- Provision of Common washrooms.
- Boundary wall – low height up to 1.5 M.
- AC Ledge.



PRASAD GROUP

Excellence, Quality and Commitment

The Group was established by its founder Late Shri Ganesh Prasad more than three decades ago. Initially the Group forayed in trading of iron and steel, thereafter they diversified in the arena of Real Estate and has successfully developed several Residential and Commercial Projects covering millions of square feet in and around Kolkata.

The Prasad Group has left its mark in the residential space through Rare Earth, Prasad Exotica, Lake District, and Prasad Nagar Apartments. It has also carved a niche in the commercial real estate sector through Prasad Chambers and Prasad Square. It provides end-to-end solutions starting from initial land identification and acquisition, project planning, designing to delivery.

Success is a journey not a destination for the Prasad Group. We have successfully understood and met customer expectations and grown manifold but we remain as committed as ever to provide even better experience for our customers.

PLATINA embraces the new concept of commercial spaces suiting requirements of business bees.

KOLKATA WAS ONCE THE CAPITAL OF THE EAST INDIA COMPANY AND THE BRITISH EMPIRE. IT WAS ONCE A GOLD- STANDARD CAPITAL OF INDIA, SECOND MOST IMPORTANT METROPOLIS OF THE BRITISH EMPIRE IN LONDON. IT WAS ONCE A GOLD- STANDARD CAPITAL OF INDIA, SECOND MOST IMPORTANT METROPOLIS OF THE BRITISH EMPIRE IN LONDON. IT WAS ONCE A GOLD- STANDARD CAPITAL OF INDIA, SECOND MOST IMPORTANT METROPOLIS OF THE BRITISH EMPIRE IN LONDON. IT WAS ONCE A GOLD- STANDARD CAPITAL OF INDIA, SECOND MOST IMPORTANT METROPOLIS OF THE BRITISH EMPIRE IN LONDON.





# SITE PLAN

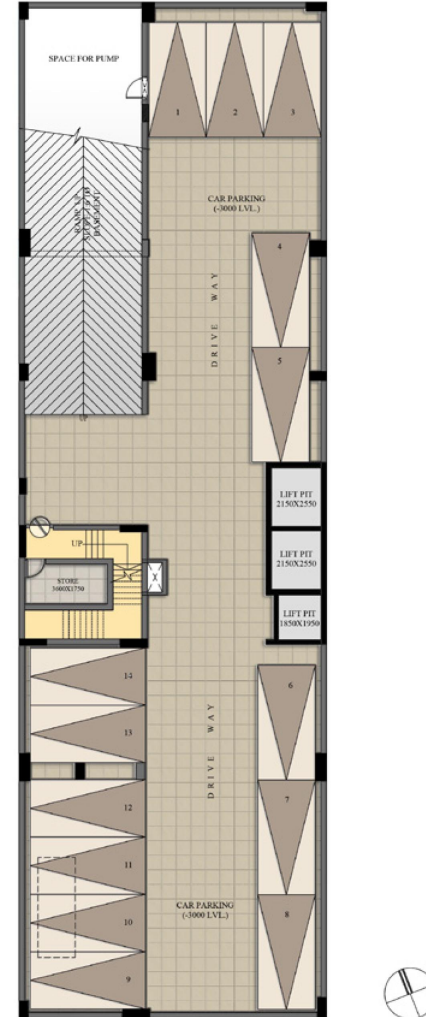
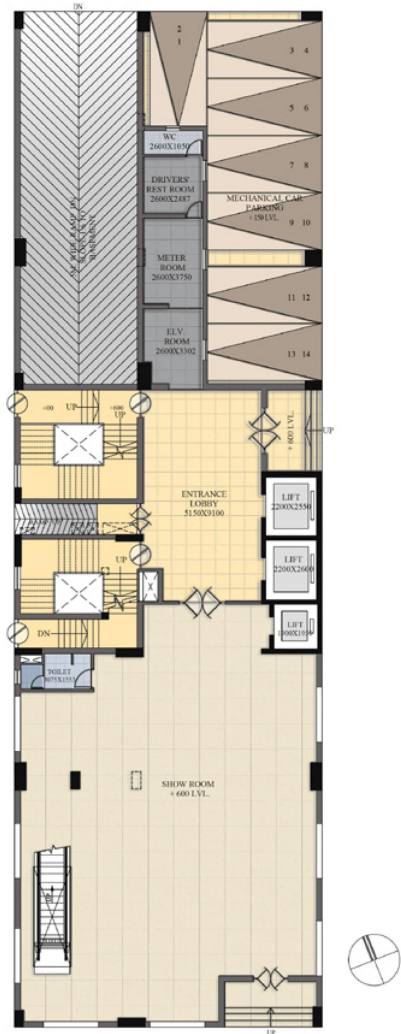
KOLKATA WAS ONCE THE CAPITAL OF INDIA, THE SECOND MOST IMPORTANT METROPOLIS IN THE BRITISH EMPIRE AFTER LONDON. IT WAS ONCE A GOLD-STANDARD IN BUSINESS AND COMMERCE. IN THE MODERN CONTEXT OUR BRAND NEW COMMERCIAL PROJECT PLATINA IS ALL SET TO REDEFINE THE COMMERCIAL SPACE OF KOLKATA WITH THE PLATINUM STANDARD.

KOLKATA WAS ONCE THE CAPITAL OF INDIA, THE SECOND MOST IMPORTANT METROPOLIS IN THE BRITISH EMPIRE AFTER LONDON. IT WAS ONCE A GOLD-STANDARD IN BUSINESS AND COMMERCE. IN THE MODERN CONTEXT OUR BRAND NEW COMMERCIAL PROJECT PLATINA IS ALL SET TO REDEFINE THE COMMERCIAL SPACE OF KOLKATA WITH THE PLATINUM STANDARD.



GROUND FLOOR PLAN

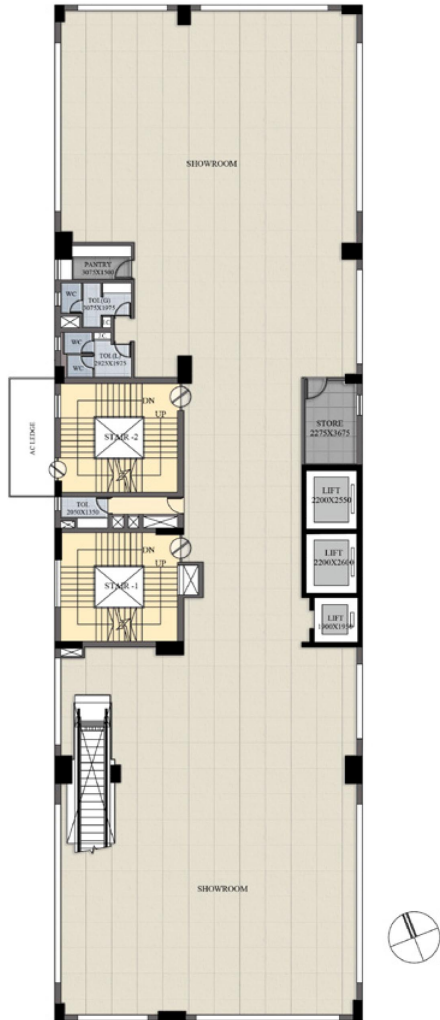
BASEMENT FLOOR PLAN





1ST FLOOR PLAN

2ND TO 8TH FLOOR PLAN



9TH FLOOR PLAN



ONGOING & UPCOMING PROJECTS

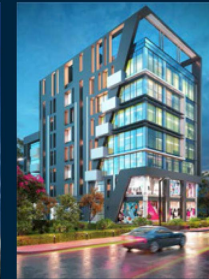
ONGOING PROJECTS



Rare Earth  
Near Swabhami



PRASAD SQUARE  
AJC Bose Road



PRASAD CENTRAL  
Sudder Street



ALTITUDE 16  
Elgin Road

UPCOMING PROJECT



Residential building at Diamond Harbour Road.





**1st Floor, Block GD 50, Rajdanga Main  
Rd, New Rainbow Palace Guest House,  
GST Bhawan, Kasba, Kolkata-700107,  
West Bengal**

**+91-9073338396**

KOLKATA WAS  
ONCE THE  
CAPITAL OF  
INDIA, THE  
SECOND MOST  
IMPORTANT  
METROPOLIS IN  
THE BRITISH  
EMPIRE AFTER  
LONDON. IT WAS  
ONCE A GOLD-  
STANDARD IN  
BUSINESS AND  
COMMERCE. IN  
THE MODERN  
CONTEXT OUR  
BRAND NEW  
COMMERCIAL  
PROJECT  
PLATINA IS  
ALL SET TO  
REDEFINE THE  
COMMERCIAL  
SPACE OF  
KOLKATA WITH  
THE PLATINUM  
STANDARD.  
KOLKATA WAS  
ONCE THE  
CAPITAL OF  
INDIA, THE  
SECOND MOST  
IMPORTANT  
METROPOLIS IN  
THE BRITISH  
EMPIRE AFTER  
LONDON. IT WAS  
ONCE A GOLD-  
STANDARD IN  
BUSINESS AND  
COMMERCE. IN  
THE MODERN  
CONTEXT OUR  
BRAND NEW  
COMMERCIAL  
PROJECT  
PLATINA IS  
ALL SET TO  
REDEFINE THE  
COMMERCIAL  
SPACE OF  
KOLKATA WITH  
THE PLATINUM  
STANDARD.

**[www.510earth.com](http://www.510earth.com)**