



# THE SUMMIT

RISE TO NEWER HEIGHTS

WHO SAYS THE FUTURE IS UNKNOWN WHEN  
YOU HAVE THE POWER TO MAKE IT HERE



## START WORK BEYOND CLOUD 9



Take professional dynamics to a different height as offices begin from 11th floor. Here, work becomes a drive towards innovation and passion as you prepare to re-write a new work culture.





## TOUCH DOWN TO SAFETY WITHOUT CONTACT IN THE FASTEST WAY

Step into the rise of a new and remarkable era as we switch wealth with health and prioritize the stringent measures of personal hygiene and safety at work. Through the emergence of hi-speed contactless elevators this building marks the origin of a new socially-distanced journey towards success.



## A GREEN SIGNAL FOR MILLENNIALS

Empowered by a dual certification from IGBC: Gold Rated Green Building Health & Well Being (pre-certified) that promotes sustainability within the workspace and its surroundings. Facilitating reduced indoor emissions, treated fresh air & renewable energy, step into the future with consciousness.





## EXPANSION FEELS LIKE 400 PARKING SPOTS

Futuristic, commercial workspaces are mindful of making space for more. At The Summit, one finds the ease and convenience of smart parking management that accommodates an expansive range of vehicles without jostling for space.



**IT'S BEEN A HARD DAY'S NIGHT  
BUT IT'S READY TO RAGE WITH  
YOU RIGHT HERE!**

Punch out of a long day and punch in chill mode. The Summit opens out huge F&B space that's bustling with lounge, pub ,cafe & more.Take a break and catch up with colleagues after work or shift a morning meeting at a café - unwind at a host of uber-cool spaces.







## HERE, START-UPS TRULY START UP

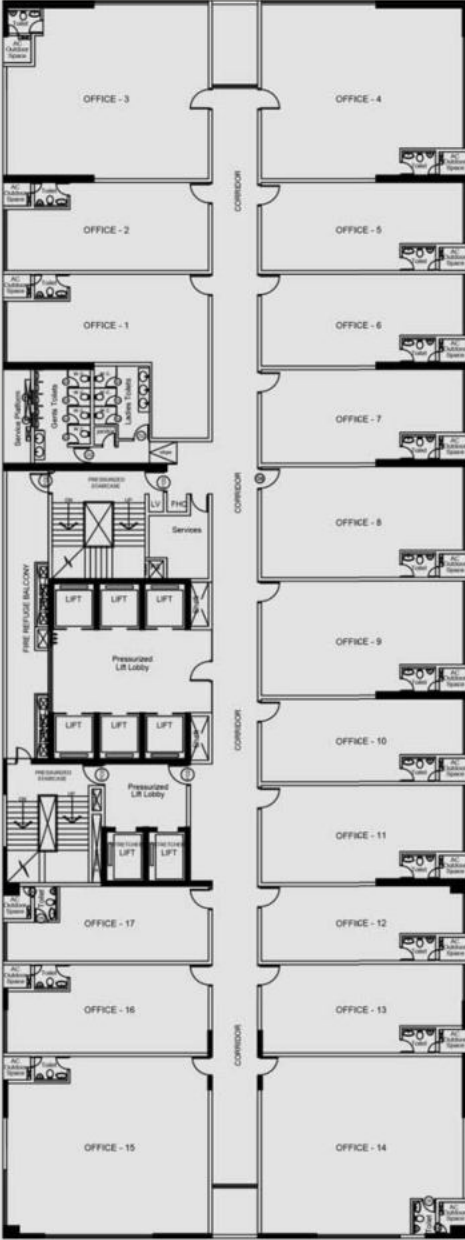
Sharpen your entrepreneurship skills by saving time and money on real estate solutions. Ideal for startups and freelance professionals. Our well planned collaborative work spaces give you the luxury of simply focusing on your new projects, ideas and networking while adding credibility to your business.



Situated at the heart of the booming IT & TechHub in Sector V, Kolkata.  
The Summit is strategically located to ensure easy accessibility within the city.

-  Domestic & International Airport - 12 Km
-  Railway Station - 7 Km | Metro Station - 2 Km
-  Commercial Hubs (Esplanade, Dalhousie & Gariahat) - 16 Km
-  5 star accommodation (Hyatt Regency, ITC Sonar & J.W.Marriott) - 6 Km





Office No.	BU Area	Carpet Area
	sqFT	sqFT
1	805	717
2	631	582
3	1240	1132
4	1233	1134
5	635	582
6	653	596
7	668	608
8	789	732
9	808	745
10	597	546
11	690	632
12	542	490
13	631	581
14	1264	1170
15	1261	1172
16	631	581
17	559	488



## TYPICAL OFFICE FLOOR PLAN

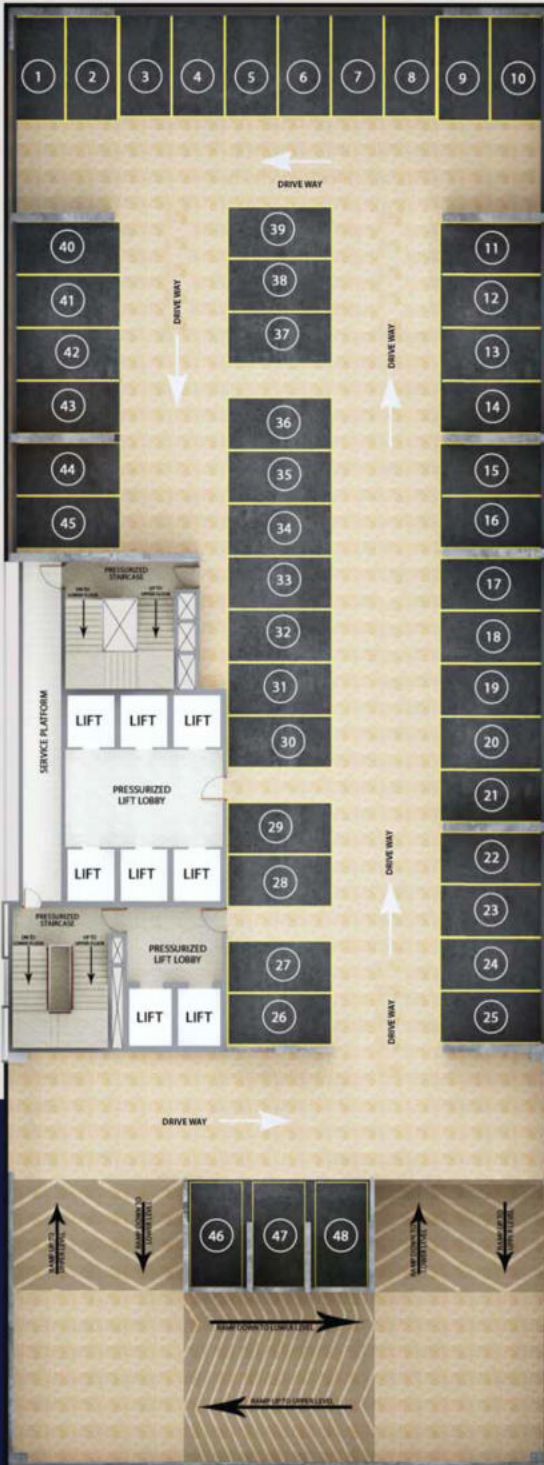


**LEGENDS**

- 1 RETAIL SPACE
- 2 EXCLUSIVE LIFT FOR RETAIL
- 3 ENTRANCE LOBBY
- 4 OPEN AIR CAFE WITH SEATING
- 5 LARGE LANDSCAPE AREA WITH AMPHITHEATRE SEATING
- 6 GAS BANK
- 7 PLUSH LANDSCAPING

**GROUND LEVEL PLAN**





## TYPICAL PARKING FLOOR PLAN

## SPECIFICATIONS

Class-A office building with exquisite facade.

A grand entrance lobby.

Premium finished office corridors, lift lobbies and other common areas

Premium work spaces with a 3.6 Meter floor-to-floor height

Work spaces with provision for installation of individual VRV AC system

Executive toilets & pantry provision inside office units

Most offices with a lake view



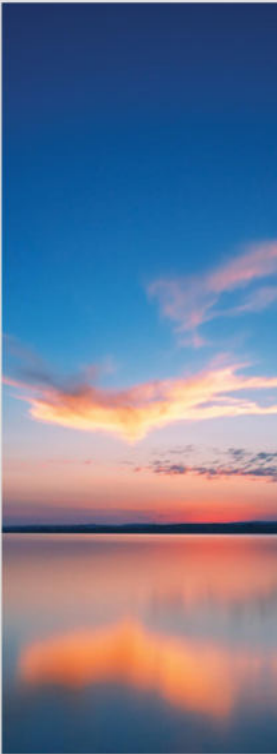
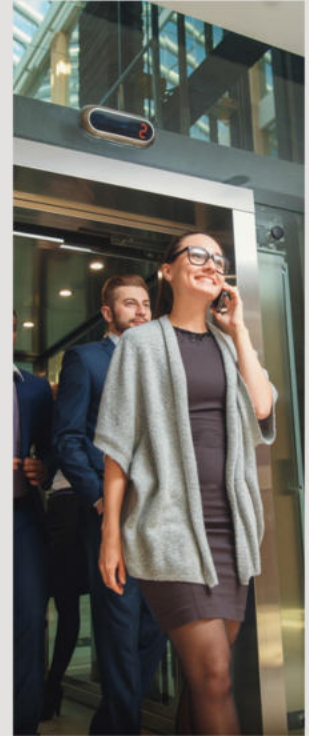
24X7 vigilance facility with CCTV camera and RFID

100% power back-up

Access controls & Boom Barriers at various points for entry & exit

BMS controlled & addressable Fire fighting system with latest equipment

Common Toilet facility on each floor



Ample car park facility for owners & visitors

Large open air Breakout zone with Cafeteria

Plush Landscaping & sit out area around the building

Lifestyle Retail and lively F&B spaces

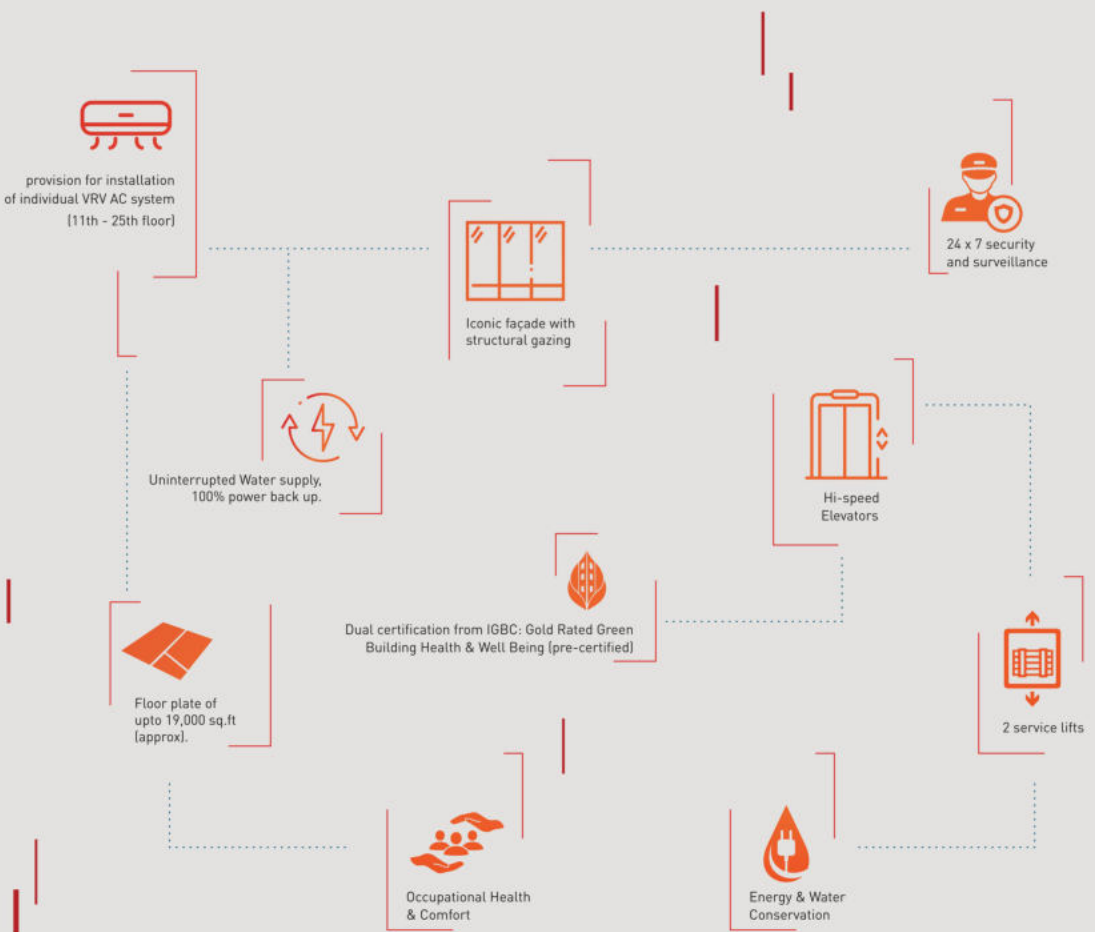


Multiple Hi-Speed elevators for to facilitate convenience

Separate Lifts for Office Retail & Service Area

Separate Stretcher lift for Exigencies & Other Services

# SPECIFICATIONS





**GREENERY AWAITS YOU,  
A LITTLE BEYOND YOUR WORK DESK**



THE SUMMIT



# HEALTH & WELL BEING RATING FEATURES



## ABOUT THE DEVELOPER

With over 3 decades of real estate experience, nationwide, complete with meticulous planning and quality craftsmanship, our aim is to create a happy home and a healthy workspace for every citizen of this country.

- Over 10 million sq.ft. of construction completed and further 10 million sq.ft. work in progress
- Over 100 real estate projects completed consisting of Residential, Commercial, Townhomes and Retail
- Over 50% sales from referrals (existing customers)
- Almost 99.99% brand recall value
- Over 30% year-on-year growth

Presently Merlin has projects in Kolkata, Chennai, Pune, Bhubaneswar, Ahmedabad and Raipur.



MERLIN ISLAND  
—  
PICNIC GARDEN



5TH AVENUE  
—  
SECTOR V, SALT LAKE



ELITA GARDEN VISTA  
—  
NEW TOWN



ACROPOLIS MALL  
—  
OFF. E.M.BYPASS



SOUTH CITY RESIDENCE  
—  
KOLKATA





ALTAIR  
COLOMBO  
—  
SRI LANKA



REFLECTION  
—  
CHENNAI

## MERLIN GROUP SHARES ALLIANCES WITH THE FOLLOWING:



West Bengal Housing Board (WBHB) forming Bengal Merlin Housing Limited



West Bengal Small Industries Development Corp. Ltd. (WBSIDCL) forming Bengal Merlin Infrastructure Ltd.



Member of CREDAI India



Consortium Partner: South City Projects



REFLECTION  
—  
CHENNAI



## PRINCIPAL ARCHITECT

Sanon Sen and Associates

## STRUCTURAL DESIGNER/REVIEWER

S.P.A. Consultants / M.N. Consultants

## LANDSCAPE ARCHITECT

Layers Design Studio

## LIGHTING CONSULTANT

Lucent Worldwide

## MEP CONSULTANT

S N Joshi Consultants Pvt. Ltd.

## VAASTU CONSULTANT

Sufal Vaastu Planners

merlinprojects.com



THE SUMMIT



Stesalit Towers, Office #7, 4th floor, Plot No E2-3, Block - EP & GP, Sector V,  
Salt Lake, Kolkata - 700091

+91-9073338396  
www.510earth.com

Disclaimer : This document is not a legal offering. It only describes the intent & concept of The Summit. All the areas / dimensions / layout / elevations etc. are only indicative and are not as per scale. All the details are subject to change, alteration and modification as per the developer's discretion.